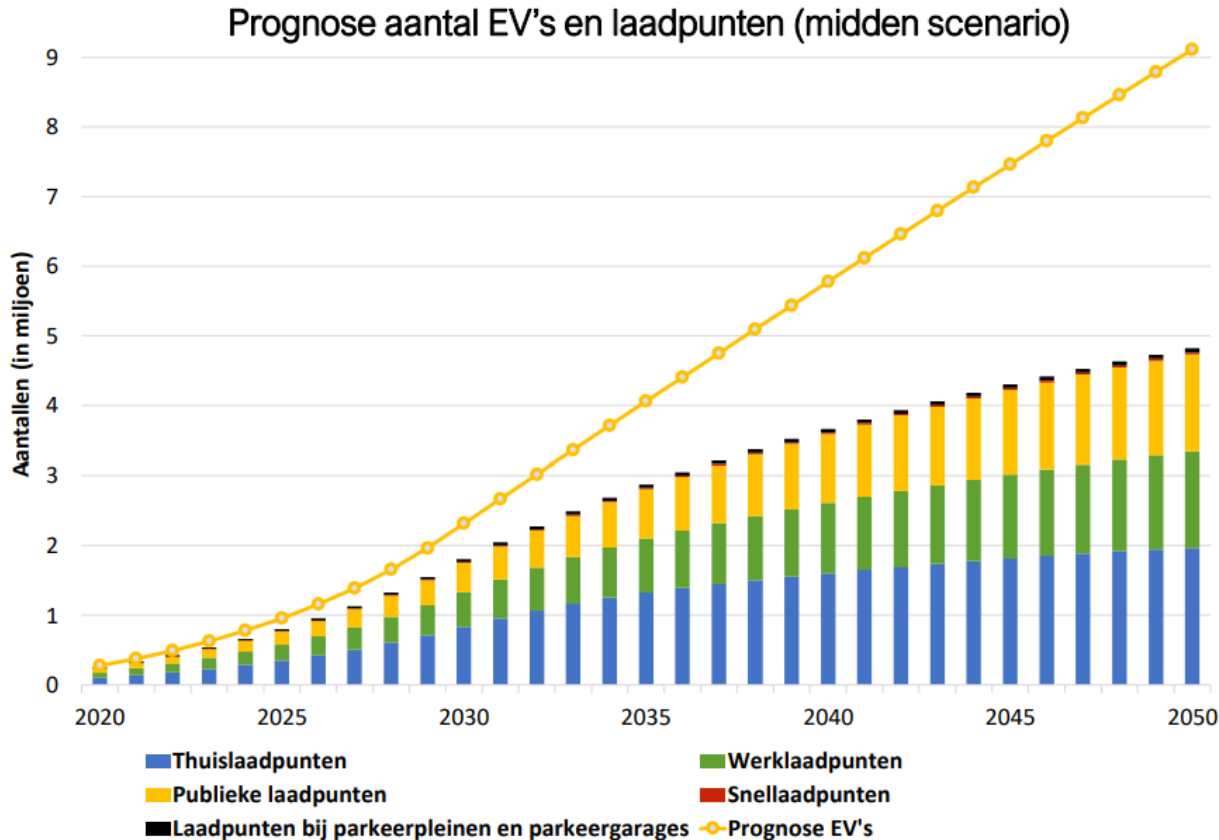




Ontwikkelingen EV
Slim laden



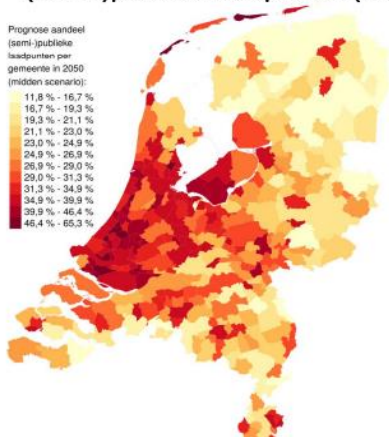
Ontwikkeling in type laadpunten



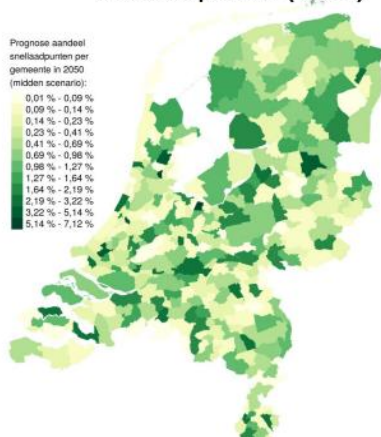
- ◆ 4 miljoen EV's in 2035
- ◆ 3 miljoen laadpunten

Regionale spreiding EV adoptie leidt tot EV hotspots

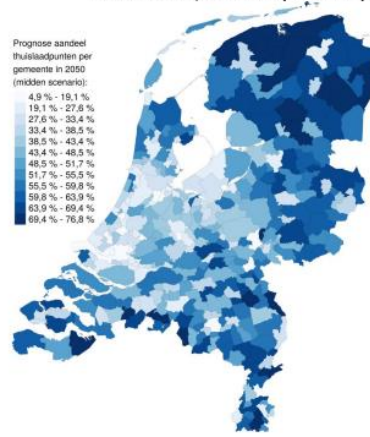
(Semi-)publieke laadpunten (30,1%)



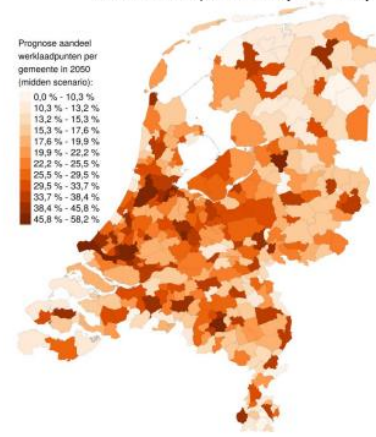
Snellaadpunten (0,6%)



Thuislaadpunten (40,8%)

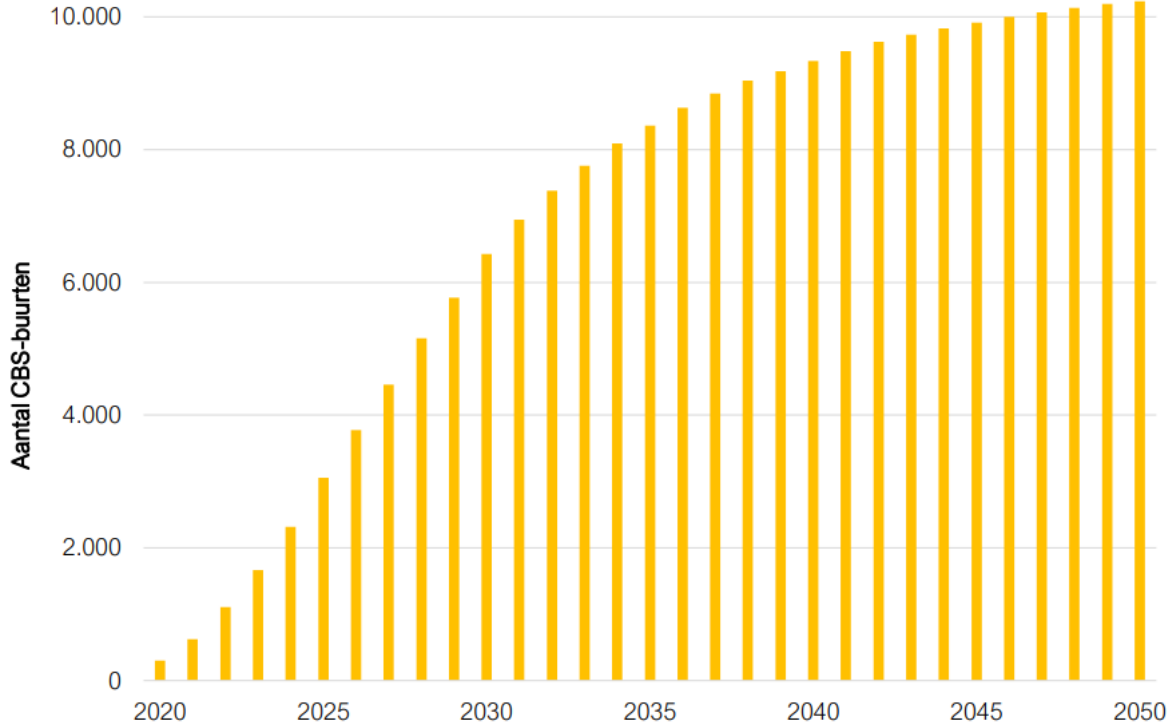


Werklaadpunten (28,4%)



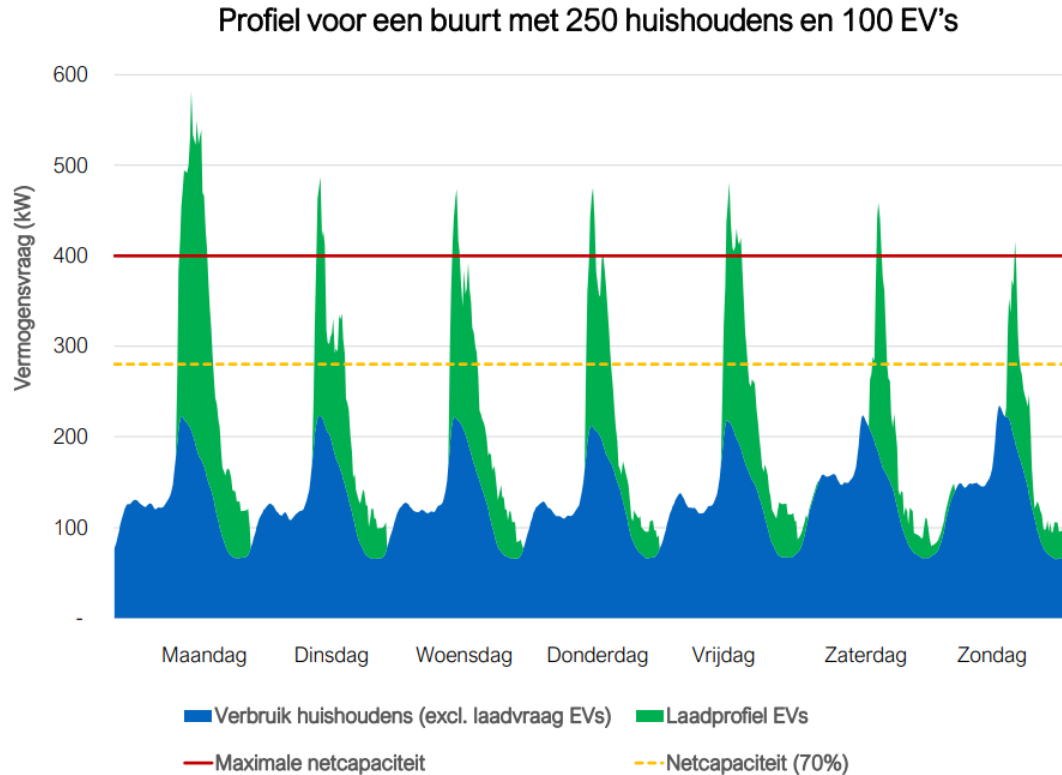
EV 'hotspots'

Aantal CBS-buurtten met minimaal 100 EV's (midden scenario)

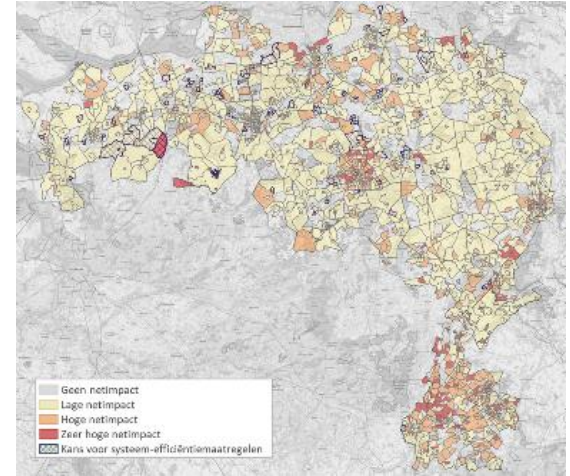
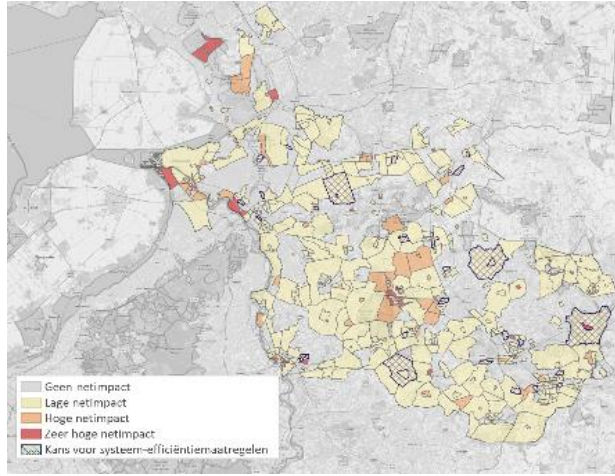
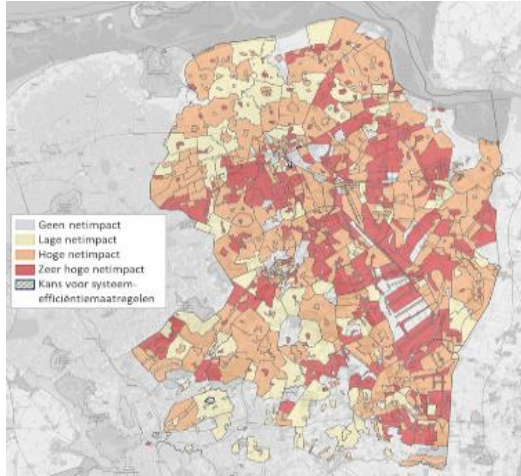


- ◆ Spreiding wordt bepaald door sociaal economische factoren
- ◆ EV 'hotspots'

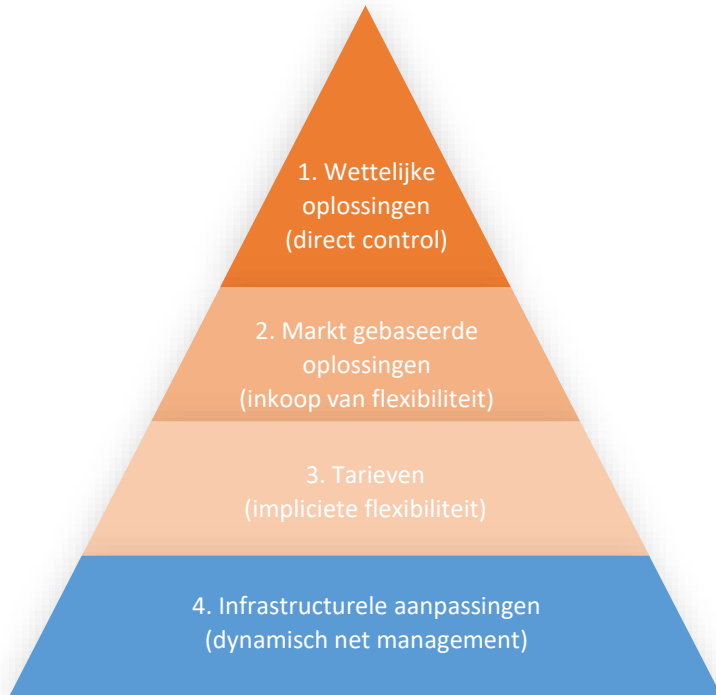
Piekbelasting EV's



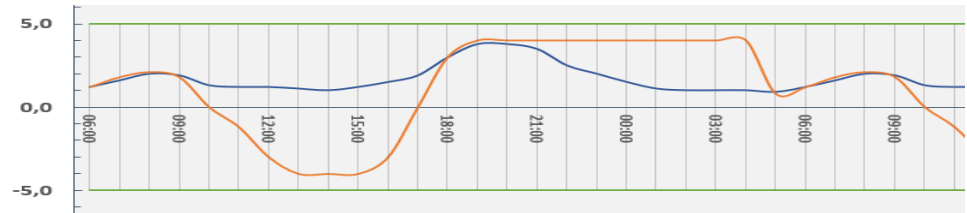
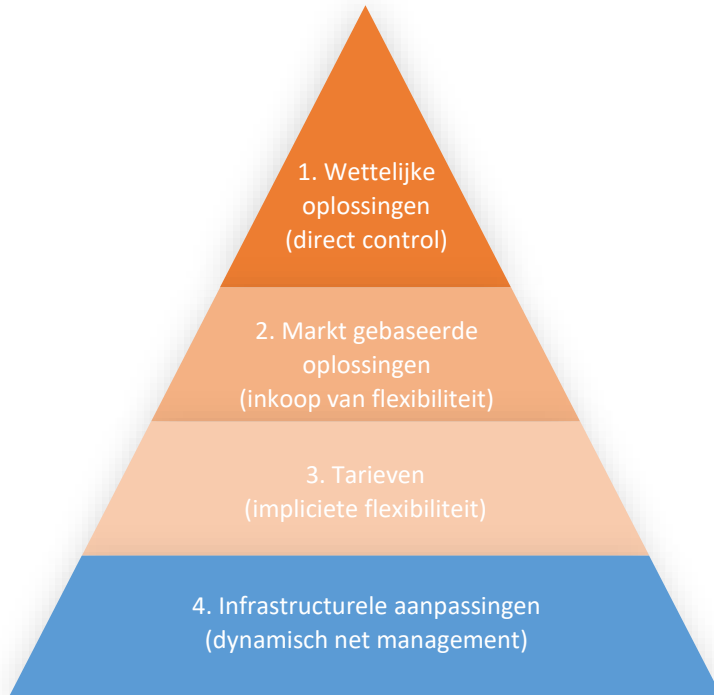
Van piekbelasting naar netimpact



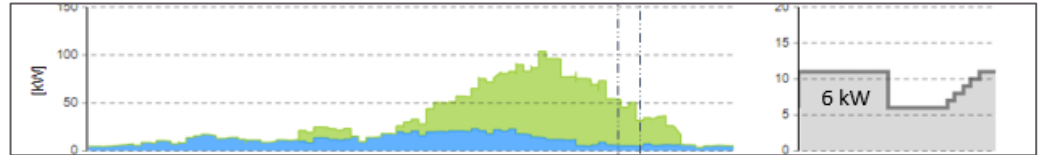
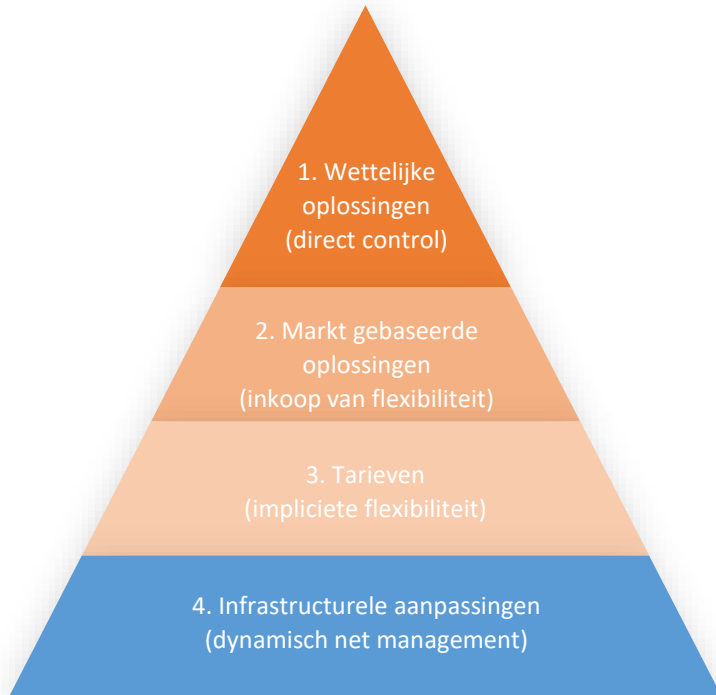
Slim laden vanuit de netbeheerder



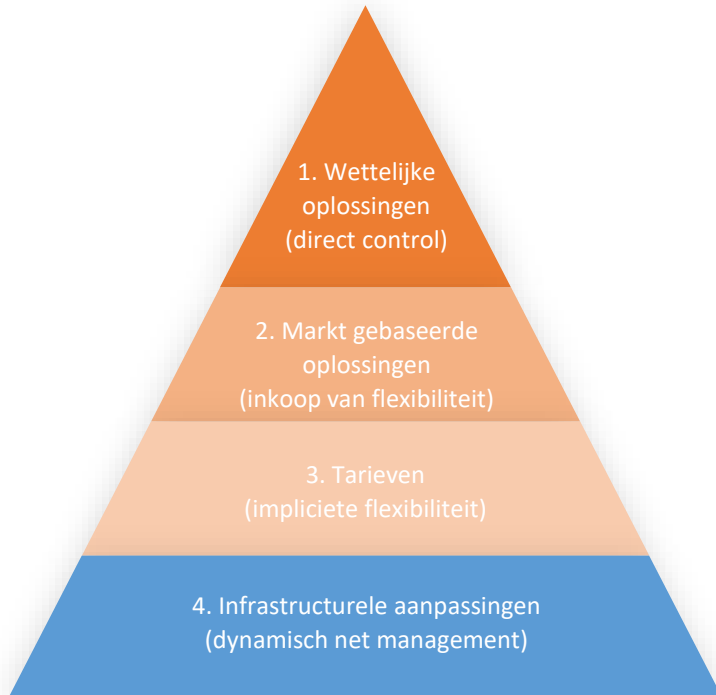
Slim laden vanuit de netbeheerder



Slim laden vanuit de netbeheerder

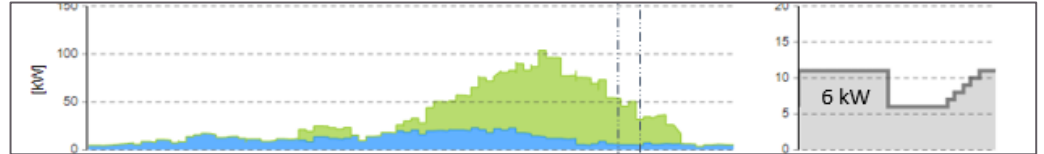
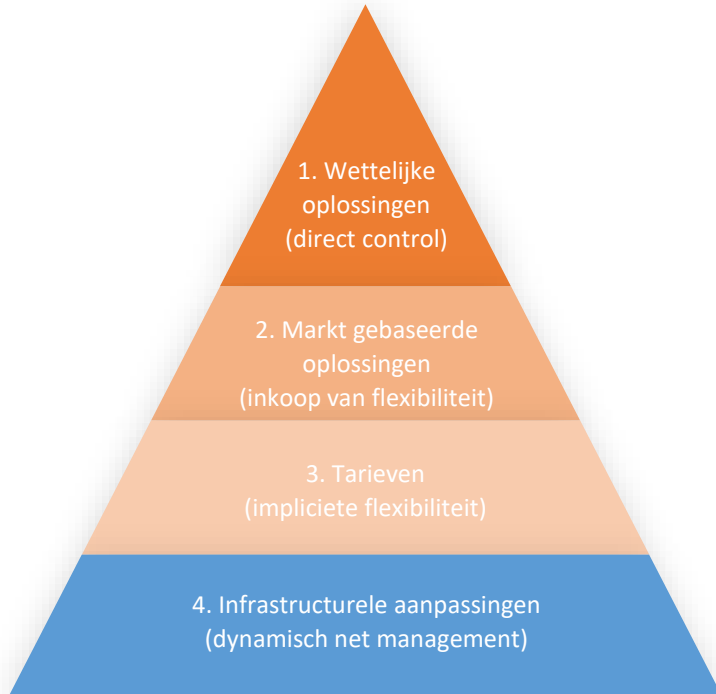


Slim laden vanuit de netbeheerder

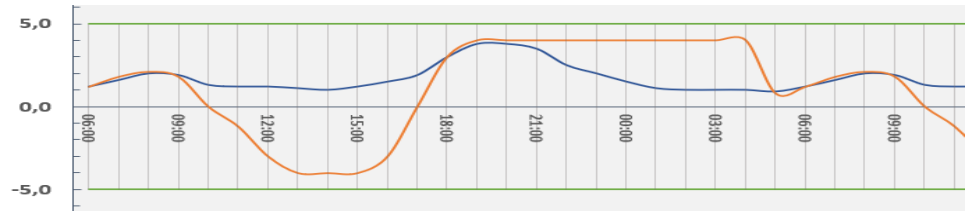


GOPACS

Slim laden vanuit de netbeheerder



GOPACS



The logo for Elaad.nl, featuring the text 'Elaad.nl' in a blue sans-serif font with a yellow lightning bolt graphic underneath.

Slim laden

Is nodig, gebeurt al, maar

De stap van techniek naar
propositie moet nog gemaakt
worden.

