



SMART ENERGY COMMUNITY

VOOR WONINGEN EN
BEDRIJFSGEBOUWEN

Harm van den Brink

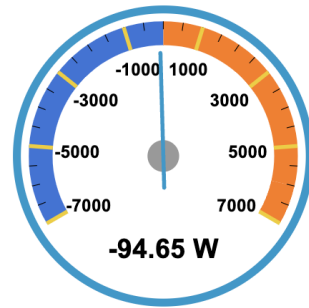
Van chaos naar standaardisatie: de puzzel

SMART ENERGY COMMUNITY VOOR WONINGEN EN BEDRIJFSGEBOUWEN

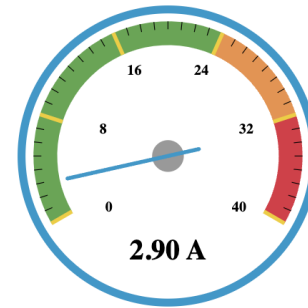
Battery SoC



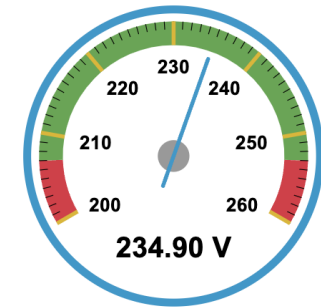
Active power (grid)



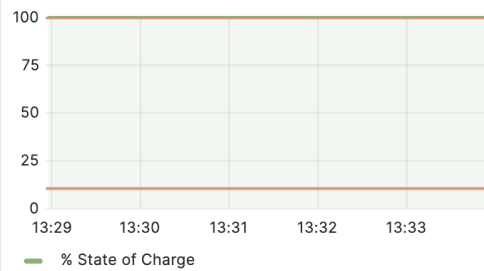
Current (grid)



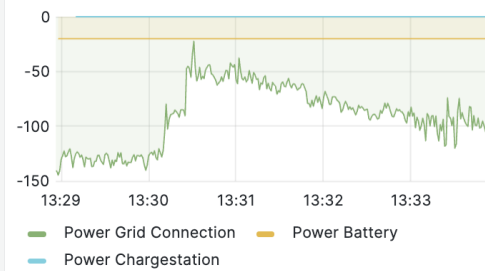
Voltage



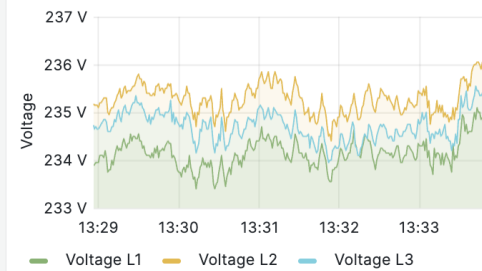
Battery SoC



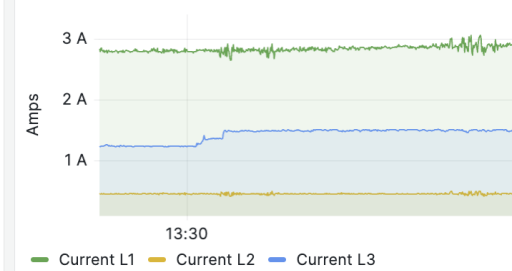
Grid vs Battery vs Chargestation



Voltage (grid)



Current



Frequency



Active Power (Total)



Battery Power



Battery Voltage



SMART ENERGY COMMUNITY VOOR WONINGEN EN BEDRIJFSGEBOUWEN

Protocollen

- Modbus
- RESTful API
- CAN
- Cloud
- ...

Standaardisatie





Cyber security

- Grote vermogens
- Verbonden aan het internet
- Protocollen zonder cyber security
- Updates?
- Secure by design?

SMART ENERGY COMMUNITY VOOR WONINGEN EN BEDRIJFSGEBOUWEN



An illustration at the top of the slide depicts a smart energy community. It features a green cube on the left with a sun icon and a dashed line leading to a building. A man in a white shirt is sitting on a ledge of a grey building. A large green leaf is in the center. To the right, a yellow cube has a house with solar panels on its roof. A man in a yellow shirt and a woman in a blue dress are standing on a green base, talking. A globe is nearby. A dashed line with a lightbulb icon connects them to the title on the right. The background is orange.

SMART ENERGY COMMUNITY VOOR WONINGEN EN BEDRIJFSGEBOUWEN

Recap

- Standaardisatie protocollen
- Cyber security
- Cloud vs lokale connectiviteit
- Optimalisatie voor duurzaamheid of euro's
- Huis als eiland of onderdeel van groter geheel





SMART ENERGY COMMUNITY

VOOR WONINGEN EN
BEDRIJFSGEBOUWEN

Vragen?